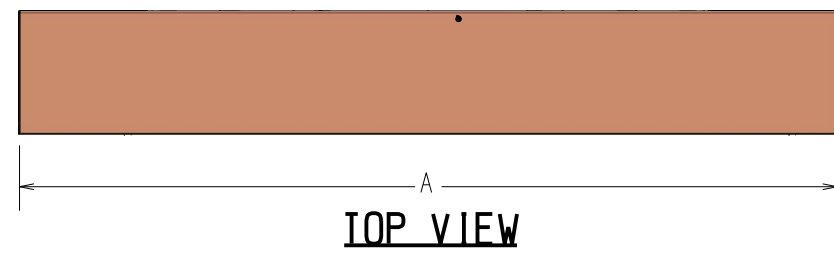
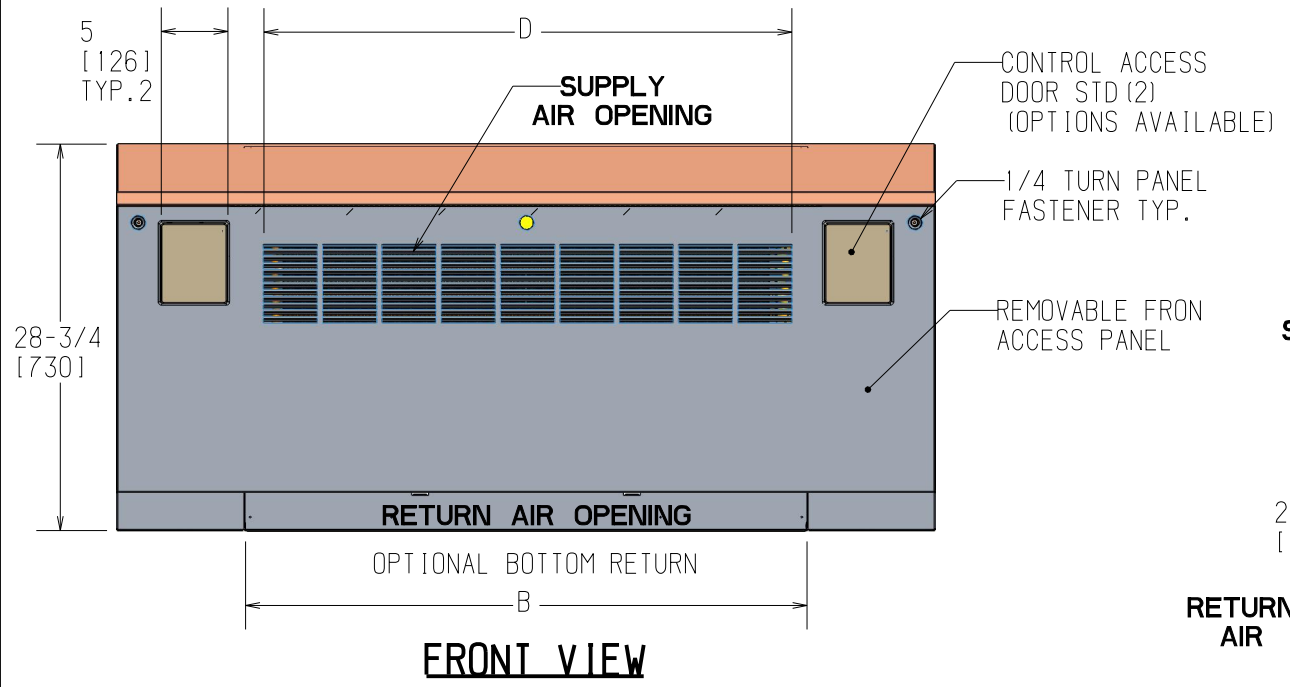


REVISION HISTORY		
REV	DATE	ECN
-	04/07/22	22-0323
A	01/18/23	23-0061



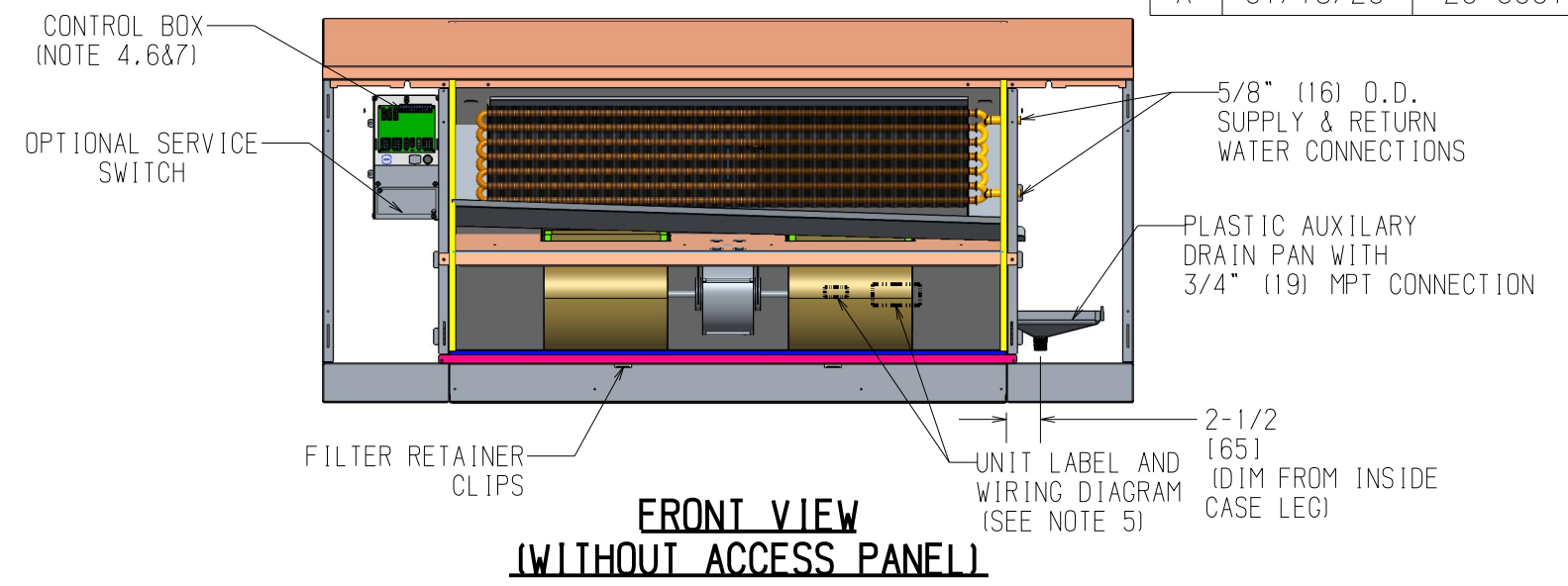
TOP VIEW



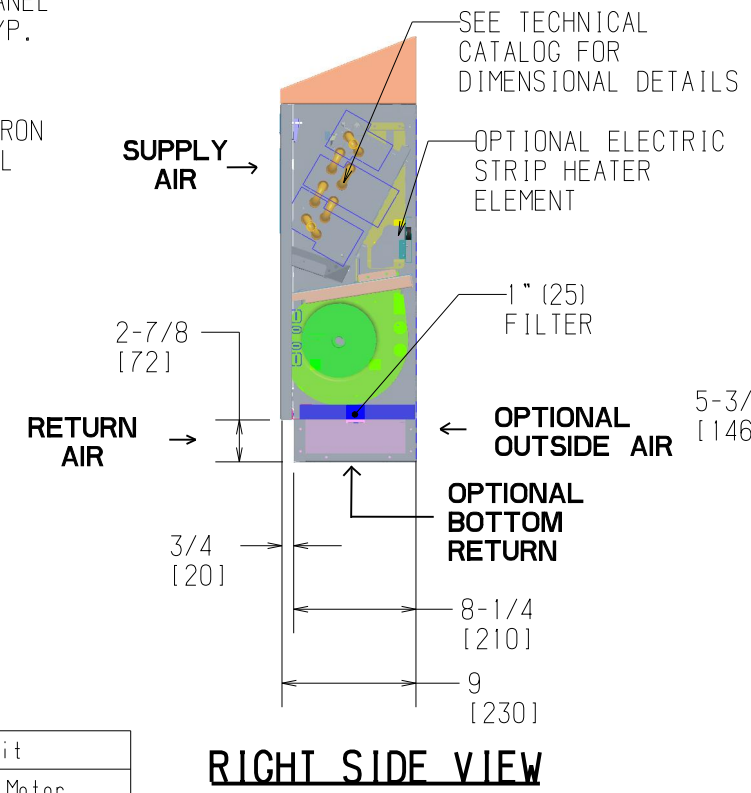
FRONT VIEW

- NOTES:
1. RH COIL SHOWN. LH OPPOSITE.
 2. ALL DIMENSIONS ARE +/- .25 (6). DRAWING NOT TO SCALE.
 3. PRODUCT SPECIFICATIONS ARE SUBJECT TO CHANGE WITHOUT NOTICE.
 4. CONTROL BOX SIZE AND POSITION MAY VARY (CONSULT FACTORY)
 5. POSITION MAY VARY.
 6. SERVICE ACCESS IS LOCATED ON THE FRONT OF THE CONTROL BOX.
 7. KNOCKOUTS ON THE BOTTOM AND SIDE OF THE CONTROL BOX FOR INCOMING POWER CONNECTIONS

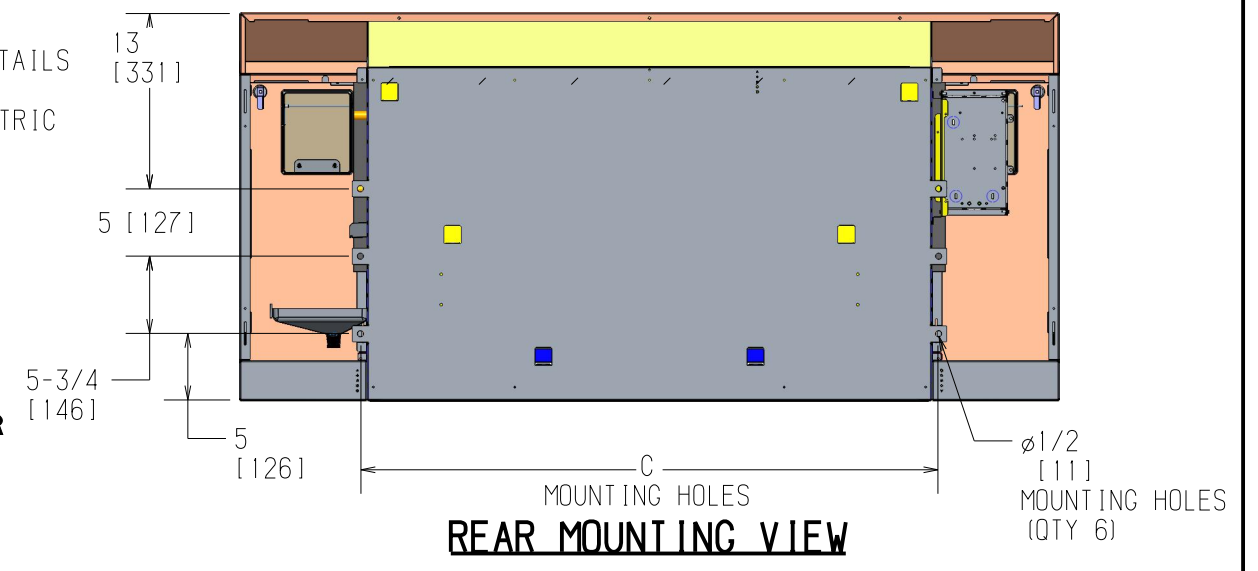
Unit Model	Dimensions - Inches (Millimeters)				Quantity/Unit	
	A	B	C	D	Blower	Motor
FSA 02	41 (1041)	22 (559)	23 (584)	17-1/4 (438)	1	1
FSA 03	45 (1143)	26 (660)	27 (686)	21-1/2 (546)	1	1
FSA 04	51 (1295)	32 (813)	33 (838)	26 (660)	2	1
FSA 06	61 (1549)	42 (1067)	43 (1092)	39-1/4 (997)	2	1
FSA 08	63 (1600)	44 (1118)	45 (1143)	39-1/4 (997)	2	1
FSA 10	77 (1956)	58 (1473)	59 (1499)	52-1/2 (1334)	4	2
FSA 12	85 (2159)	66 (1676)	67 (1702)	61-1/4 (1556)	4	2



FRONT VIEW (WITHOUT ACCESS PANEL)



RIGHT SIDE VIEW



REAR MOUNTING VIEW

TITLE			
VERT SLOPE CABINET FRNT SPLY FSA OPTIONAL ELECTRIC HEAT SHOWN			
DWC NO			REV
1100-90050669			A
DRAWN	DATE	APPROVED	DATE
J. BRADFORD	06/29/22	J. FUSON	06/29/22