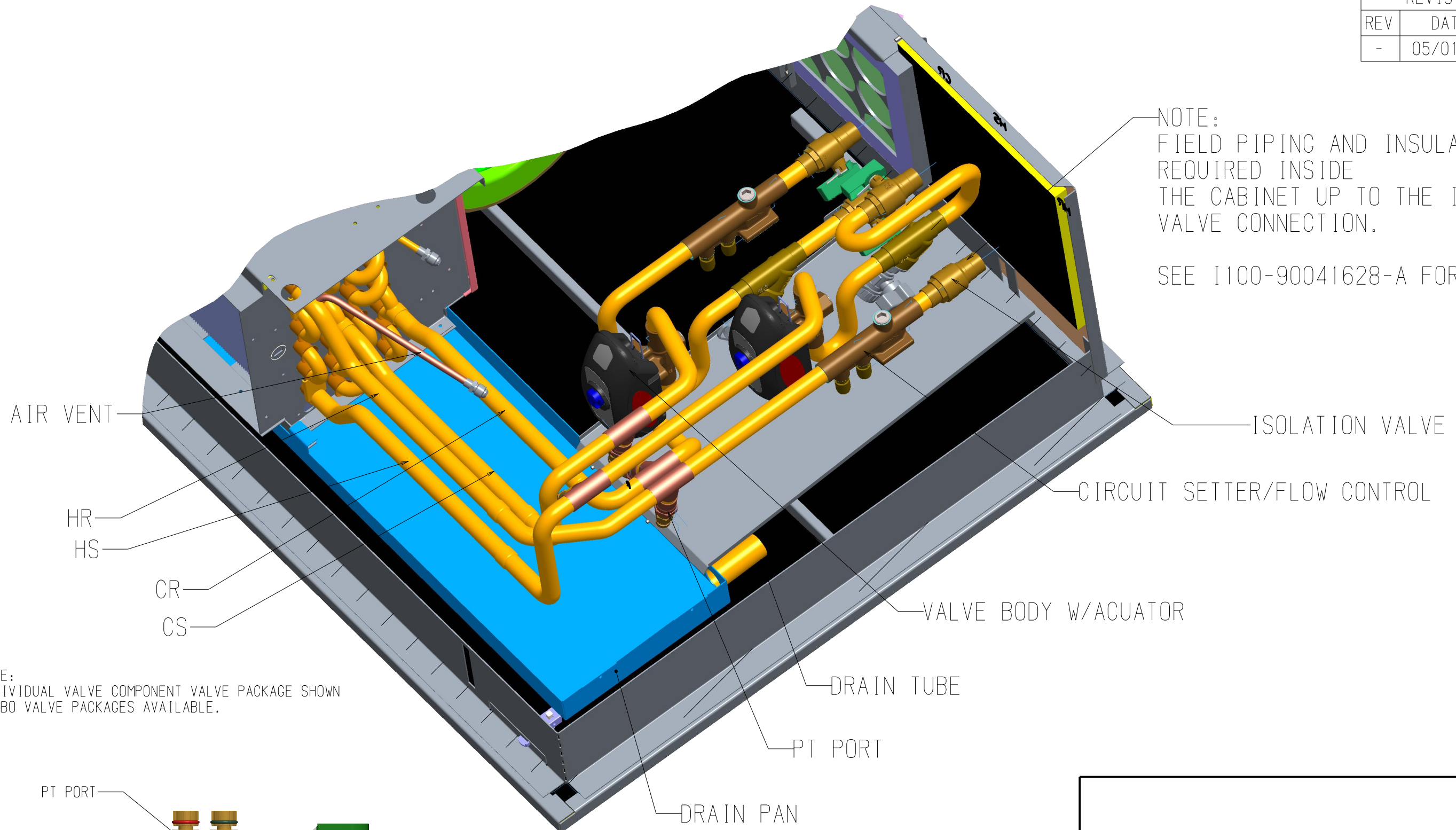


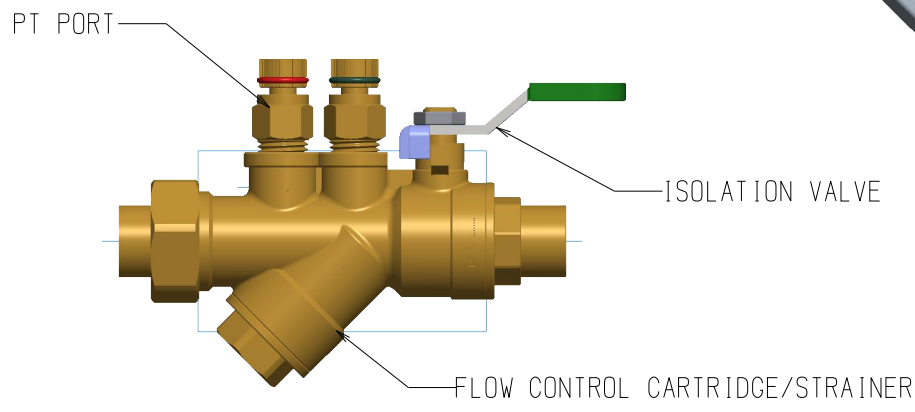
REVISION HISTORY		
REV	DATE	ECN
-	05/01/18	18-0608

NOTE:  
FIELD PIPING AND INSULATION  
REQUIRED INSIDE  
THE CABINET UP TO THE ISOLATION  
VALVE CONNECTION.

SEE I100-90041628-A FOR DISTANCES



NOTE:  
INDIVIDUAL VALVE COMPONENT VALVE PACKAGE SHOWN  
COMBO VALVE PACKAGES AVAILABLE.



TITLE			
VALVE PACKAGE SUPPLEMENT CB/CX UNITS			
DWC NO			REV
<b>I100-90041628-B</b>			-
DRAWN	DATE	APPROVED	DATE
J. FUSON	03/19/20	S. STOTTS	03/19/20