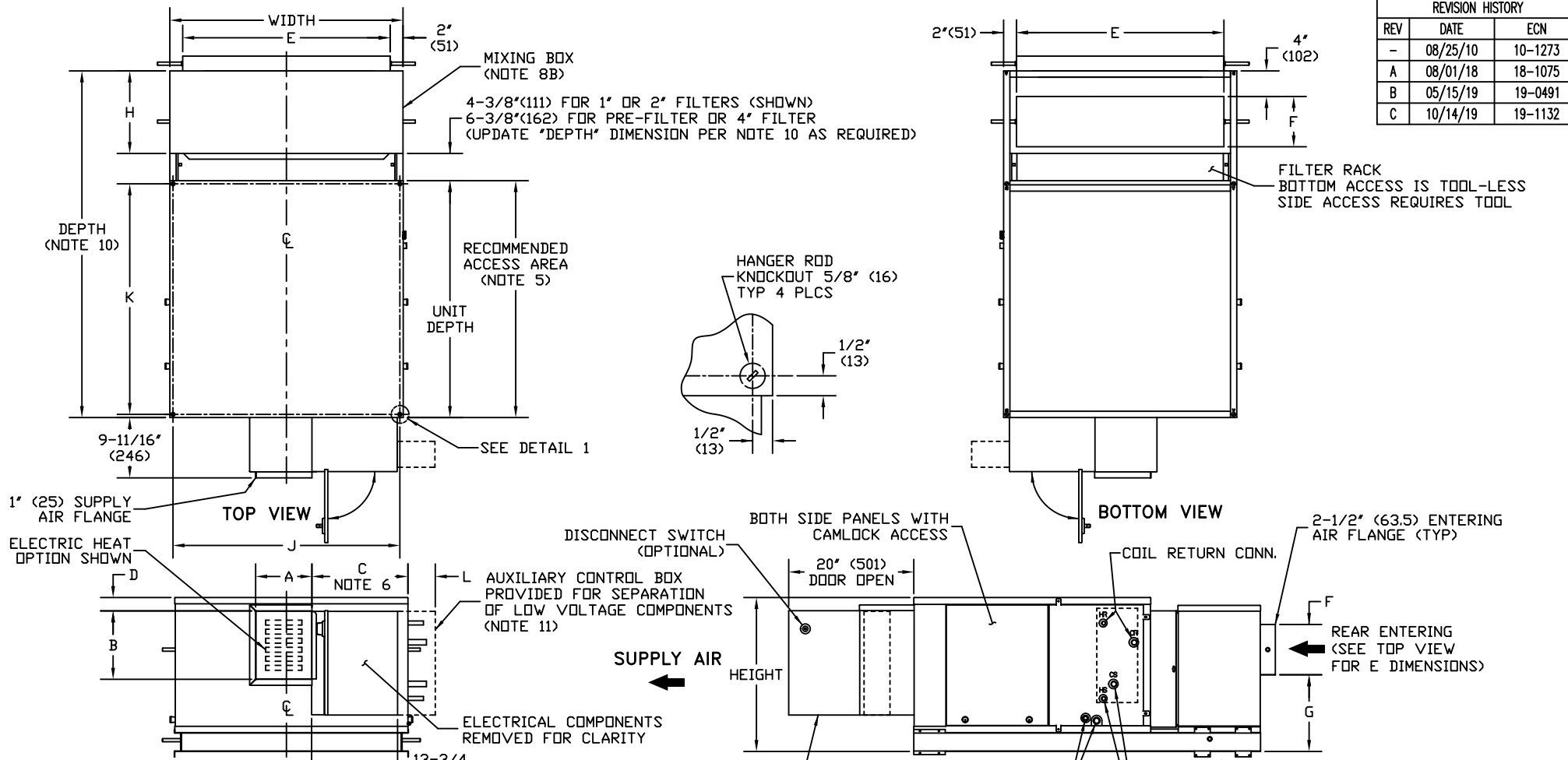


REVISION HISTORY		
REV	DATE	ECN
-	08/25/10	10-1273
A	08/01/18	18-1075
B	05/15/19	19-0491
C	10/14/19	19-1132



- NOTES:**
- RIGHT-HAND SHOWN, LEFT HAND OPPOSITE.
 - ALL DIMENSIONS ±1/4 INCH (6 MM).
 - PRODUCT SPECIFICATIONS ARE SUBJECT TO CHANGES WITHOUT NOTICE.
 - DIMENSIONS IN PARENTHESIS ARE IN MILLIMETERS.
 - ALLOW ADEQUATE SPACING FOR MANUEVERABILITY AROUND UNIT TO ALLOW SERVICE THROUGH RECOMMENDED ACCESS AREA.
 - "C" DIMENSION IS MEASURED FROM COIL SIDE OF UNIT.
 - MIXING BOX OPTION WILL VARY RETURN DUCT DIMENSIONS.
 - MIXING BOX OPTIONS INCLUDE:
 - A.) KNOCKDOWN BASE RAILS FOR FIELD ASSEMBLY, WHICH ARE LETTER CODED FOR EASE OF ASSEMBLY. ALL ASSEMBLY HARDWARE INCLUDED.
 - B.) PREASSEMBLED MIXING BOX. REFER TO TECHNICAL CATALOG FOR MORE DETAILS.
 - LINKAGE KIT SUPPLIED WITH MIXING BOX IS PROVIDED FOR FIELD INSTALLATION OF ACTUATOR; CONSISTING OF 2 CRANK ARMS, 2 SWIVELS, AND EITHER A 25" (SIZES 06-16) OR 34" (SIZES 20-40) LENGTH OF 5/16" ROD.
 - ADD 2"(51) IF USING A PRE-FILTER OR 4"(102) FILTER.
 - AUXILIARY CONTROL BOX REQUIRED WITH 3-SPEED EC MOTORS AND/OR CABINET LIGHTING OPTION, NOT REQUIRED WITH LOW VOLTAGE (0-10V) CONTROLS.

SIZE	FAN SIZE	DEPTH	UNIT DEPTH	WIDTH	HEIGHT	SUPPLY DUCT				RETURN DUCT(S)			MIX BOX	MOUNTING HOLES		AUX BOX
						A	B	C	D	E	F	G		H	J	
HDY06	9X6	51-5/8(1311)	36(914)	28(711)	22-3/4(578)	8-7/8(225)	10-7/8(276)	13-3/4(349)	2-1/4(57)	24(610)	6(152)	12-1/2(318)	11(279)	27-1/4(686)	35-1/4(895)	5-3/4(146)
HDY08	9X6	51-5/8(1311)	36(914)	28(711)	22-3/4(578)	8-7/8(225)	10-7/8(276)	13-3/4(349)	2-1/4(57)	24(610)	6(152)	12-1/2(318)	11(279)	27-1/4(686)	35-1/4(895)	5-3/4(146)
HDY10	9X6	55-1/8(1400)	37-1/2(953)	37(940)	24-1/2(622)	10-1/4(260)	10-7/8(276)	14-1/2(368)	2-1/4(57)	33(838)	8(203)	14-1/4(362)	13(330)	36-1/4(921)	37(940)	5(124)
HDY12	9X6	55-1/8(1400)	37-1/2(953)	37(940)	24-1/2(622)	10-1/4(260)	10-7/8(276)	14-1/2(368)	2-1/4(57)	33(838)	8(203)	14-1/4(362)	13(330)	36-1/4(921)	37(940)	5(124)
HDY16	10X7	55-3/8(1407)	37-3/4(959)	47(1194)	24-1/2(622)	13(330)	12(305)	18-3/8(467)	2-1/4(57)	43(1092)	8(203)	14-1/4(362)	13(330)	46-1/4(1175)	37(940)	1-1/4(32)
HDY20																
HDY22	11X10	57-3/4(1467)	40-1/4(1022)	48(1219)	27(686)	16-1/4(413)	13(330)	17-1/4(438)	2-1/4(57)	44(1118)	8(203)	16-3/4(425)	13(330)	47-1/4(1200)	39-1/2(1033)	2-3/8(60)
HDY30	12X12	59-3/4(1518)	40-1/4(1022)	48(1219)	35-1/4(895)	16-1/4(413)	14(356)	16(406)	7-1/8(181)	44(1118)	10(254)	15(381)	15(381)	47-1/4(1200)	39-1/2(1033)	3-3/4(95)

TITLE
HORIZONTAL DIRECT DRIVE WITH MIXING BOX

DRAWN BY
S. ADKINS

MODEL
HDY W/ MIX BOX

JOB NUMBER

JOB NAME

DRAWING NUMBER
1100-90032251

REVISION
C

SHEET
1 OF 1