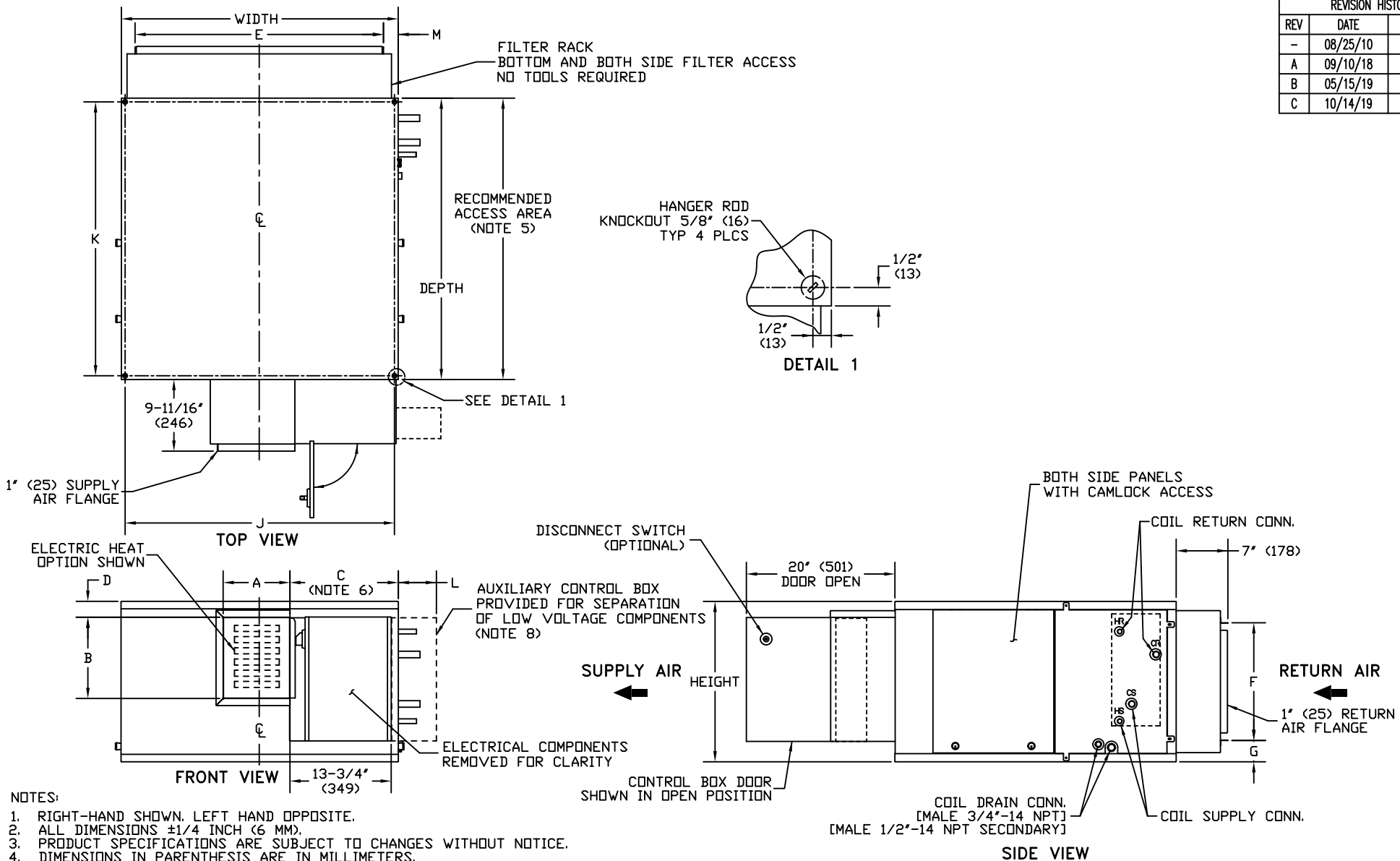


REVISION HISTORY		
REV	DATE	ECN
-	08/25/10	10-1273
A	09/10/18	18-1280
B	05/15/19	19-0491
C	10/14/19	19-1132



- NOTES:
1. RIGHT-HAND SHOWN. LEFT HAND OPPOSITE.
 2. ALL DIMENSIONS $\pm 1/4$ INCH (6 MM).
 3. PRODUCT SPECIFICATIONS ARE SUBJECT TO CHANGES WITHOUT NOTICE.
 4. DIMENSIONS IN PARENTHESIS ARE IN MILLIMETERS.
 5. ALLOW ADEQUATE SPACING FOR MANUEVERABILITY AROUND UNIT TO ALLOW SERVICE THROUGH RECOMMENDED ACCESS AREA.
 6. "C" DIMENSION IS MEASURED FROM COIL SIDE OF UNIT.
 7. MIXING BOX OPTION WILL VARY RETURN DUCT DIMENSIONS, REFER TO MIXING BOX SUBMITTAL.
 8. AUXILIARY CONTROL BOX REQUIRED WITH 3-SPEED EC MOTORS AND/OR CABINET LIGHTING OPTION, NOT REQUIRED WITH LOW VOLTAGE (0-10V) CONTROLS.

SIZE	FAN SIZE	DEPTH	WIDTH	HEIGHT	SUPPLY DUCT FLANGES				RETURN DUCT FLANGES			MOUNTING HOLES		AUX CTRL BOX	M
					A	B	C	D	E	F	G	J	K		
HDY06	9X6	36(914)	28(711)	19-3/4(502)	8-7/8(225)	10-7/8(276)	13-3/4(349)	2-1/4(57)	24-1/4(616)	14(356)	2-3/4(70)	27-1/4(686)	35-1/4(895)	5-3/4(146)	2(51)
HDY08	9X6	36(914)	28(711)	19-3/4(502)	8-7/8(225)	10-7/8(276)	13-3/4(349)	2-1/4(57)	24-1/4(616)	14(356)	2-3/4(70)	27-1/4(686)	35-1/4(895)	5-3/4(146)	2(51)
HDY10	9X6	37-1/2(953)	37(940)	21-1/2(546)	10-1/4(260)	10-7/8(276)	14-1/2(368)	2-1/4(57)	33-1/4(845)	15-3/4(401)	2-7/8(73)	36-1/4(921)	37(940)	5(124)	2(51)
HDY12	9X6	37-1/2(953)	37(940)	21-1/2(546)	10-1/4(260)	10-7/8(276)	14-1/2(368)	2-1/4(57)	33-1/4(845)	15-3/4(401)	2-7/8(73)	36-1/4(921)	37(940)	5(124)	2(51)
HDY16	10X7	37-3/4(959)	47(1194)	21-1/2(546)	13(330)	12(305)	18-3/8(467)	2-1/4(57)	43-7/8(1115)	15-3/4(401)	2-7/8(73)	46-1/4(1175)	37(940)	1-1/4(32)	1-1/2(38)
HDY20	11X10	40-1/4(1022)	48(1219)	24(610)	16-1/4(413)	13(330)	17-1/4(438)	2-1/4(57)	44-1/4(1124)	18(457)	2-7/8(73)	47-1/4(1200)	39-1/2(1033)	2-3/8(60)	2(51)
HDY22	11X10	40-1/4(1022)	48(1219)	24(610)	16-1/4(413)	13(330)	17-1/4(438)	2-1/4(57)	44-1/4(1124)	18(457)	2-7/8(73)	47-1/4(1200)	39-1/2(1033)	2-3/8(60)	2(51)
HDY30	12X12	40-1/4(1022)	48(1219)	32-1/4(819)	16-1/4(413)	14(356)	16(406)	7-1/8(181)	44-1/4(1124)	26-1/2(673)	1-1/4(32)	47-1/4(1200)	39-1/2(1033)	3-3/4(95)	2(51)

TITLE
HORIZONTAL DIRECT DRIVE

DRAWN BY
S. ADKINS

MODEL
HDY

JOB NUMBER

JOB NAME

DRAWING NUMBER
1100-90032250

REVISION
C

SHEET
1 OF 1