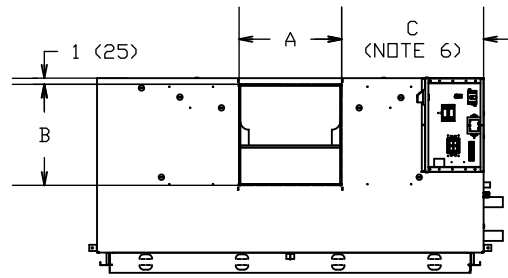
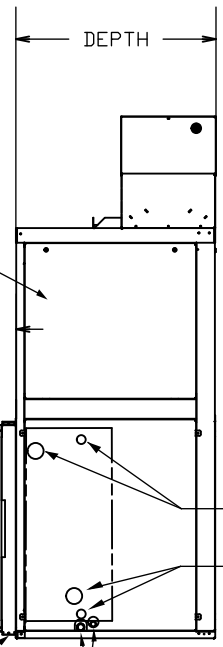


REVISION HISTORY		
REV	DATE	ECN
-	08/25/10	10-1273
A	09/09/11	11-1241
B	04/22/19	19-0422



TOP VIEW

SUPPLY AIR ↑



SIDE VIEW

BOTH SIDES AND FRONT PANEL WITH CAMLOCK ACCESS

4-3/8 (111)  
ADD 2 INCHES FOR MERV11 FILTER

RETURN AIR →

1" (25) RETURN AIR COLLAR

FILTER RACK WITH TOOLLESS ACCESS FROM SIDES AND TOP

1" (25) SUPPLY AIR COLLAR

18 (457) DOOR OPEN

8-3/4 (222)

MOTOR CONTROLS AND MOTOR MOUNTED SAME SIDE AS COIL CONNECTIONS

HEIGHT

RECOMMENDED ACCESS AREA (NOTE 4)

F

2 (51)

FRONT VIEW

- NOTES:
1. RIGHT HAND SHOWN, LEFT HAND OPPOSITE.
  2. ALL DIMENSIONS +/- 1/4 INCH (+/- 6 MM)
  3. DRAIN PAN REMOVAL IS ON THE PIPING SIDE OF THE UNIT
  4. ALLOW ADEQUATE SPACING OR MANUEVERABILITY OF UNIT TO ALLOW SERVICE THROUGH RECOMMENDED ACCESS AREA
  5. DIMENSIONS IN PARENTHESIS ARE IN MILLIMETERS.
  6. "C" DIMENSION IS MEASURED FROM COIL SIDE OF UNIT.
  7. PRODUCT SPECIFICATIONS ARE SUBJECT TO CHANGE WITHOUT NOTICE.

SIZE	FAN SIZE	DEPTH	WIDTH	HEIGHT	SUPPLY DUCT			RETURN DUCT	
					A	B	C	E	F
VBA06	9X4	20 (508)	28 (711)	36-1/2 (927)	7-1/8(181)	10-1/2(267)	16-3/4 (425)	24 (610)	16-1/2(419)
VBA08	9X6	20 (508)	28 (711)	36-1/2 (927)	8-1/2(216)	10-1/2(267)	15-1/4 (387)	24 (610)	16-1/2(419)
VBA10	10X4	22 (559)	37 (940)	39-3/8 (1000)	7-1/2(191)	11-9/16(294)	24-1/2 (622)	33 (838)	18-1/4(464)
VBA12	10X7	22 (559)	37 (940)	39-3/8 (1000)	9-15/16(252)	11-9/16(294)	21-1/2 (546)	33 (838)	18-1/4(464)
VBA16	11X10	22 (559)	47 (1194)	39-3/8 (1000)	13-3/8(340)	12-3/4(324)	16-3/4(425)	43 (1092)	18-1/4(464)
VBA20	12X9	24 (610)	48 (1219)	45-1/8 (1146)	12-1/2(216)	13-3/4(349)	17-3/4(451)	44 (1118)	20-3/4(527)
VBA30	12X12	28 (711)	48 (1219)	54-3/16 (1376)	15-7/8(403)	13-3/4(349)	16 (406)	44 (1118)	29 (737)
VBA40	15X12	28 (711)	62 (1575)	57-5/8 (1464)	16-7/16(418)	16-1/16(408)	22-3/4(578)	58 (1473)	29 (737)

TITLE  
**VERTICAL BELT DRIVE MOT CTRL**

MODEL  
**VBA**

JOB NUMBER

JOB NAME

DRAWN BY  
**A.HUBBARD**

DRAWING NUMBER  
**I100-90011621**

REVISION  
**B**

SHEET  
**1 OF 1**