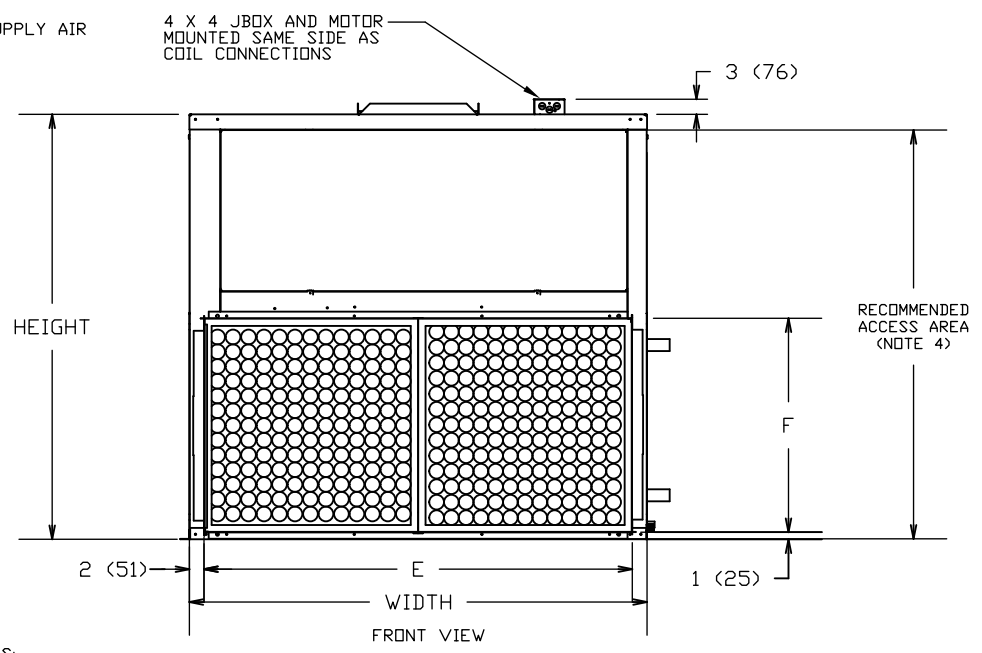
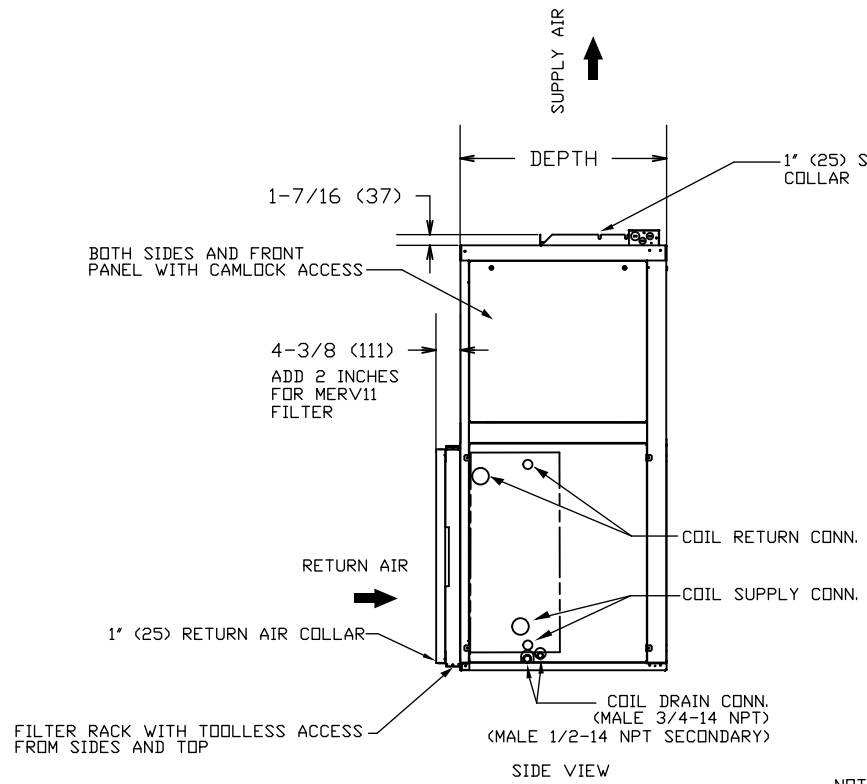
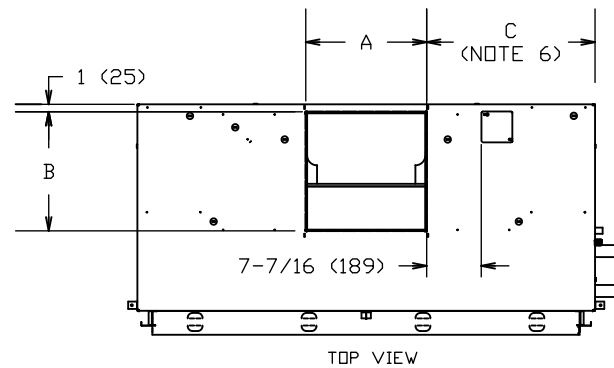


REVISION HISTORY		
REV	DATE	ECN
-	08/25/10	10-1273
A	09/09/11	11-2141
B	04/22/19	19-0422



- NOTES:
1. RIGHT HAND SHOWN, LEFT HAND OPPOSITE.
  2. ALL DIMENSIONS +/- 1/4 INCH (+/- 6 MM)
  3. DRAIN PAN REMOVAL IS ON THE PIPING SIDE OF THE UNIT
  4. ALLOW ADEQUATE SPACING OR MANUEVERABILITY OF UNIT TO ALLOW SERVICE THROUGH RECOMMENDED ACCESS AREA
  5. DIMENSIONS IN PARENTHESIS ARE IN MILLIMETERS.
  6. "C" DIMENSION IS MEASURED FROM COIL SIDE OF UNIT.
  7. PRODUCT SPECIFICATIONS ARE SUBJECT TO CHANGE WITHOUT NOTICE.

SIZE	FAN SIZE	DEPTH	WIDTH	HEIGHT	SUPPLY DUCT			RETURN DUCT		TITLE	
					A	B	C	E	F	VERTICAL BELT DRIVE	
VBA 06	9X4	20 (508)	28 (711)	36-1/2 (927)	7-1/8(181)	10-1/2(267)	16-3/4 (425)	24 (610)	16-1/2(419)	MODEL VBA	
VBA 08	9X6	20 (508)	28 (711)	36-1/2 (927)	8-1/2(216)	10-1/2(267)	15-1/4 (387)	24 (610)	16-1/2(419)	JOB NUMBER	
VBA 10	10X4	22 (559)	37 (940)	39-3/8 (1000)	7-1/8(181)	11-9/16(294)	24-1/2 (622)	33 (838)	18-1/4(464)	JOB NAME	
VBA 12	10X7	22 (559)	37 (940)	39-3/8 (1000)	9-15/16(252)	11-9/16(294)	21-1/2 (546)	33 (838)	18-1/4(464)	DRAWN BY A.HUBBARD	
VBA 16	11X10	22 (559)	47 (1194)	39-3/8 (1000)	13-3/8(340)	12-3/4(324)	16-3/4(425)	43 (1092)	18-1/4(464)	DRAWING NUMBER 1100-90011619	
VBA 20	12X9	24 (610)	48 (1219)	45-1/8 (1146)	12-1/2(216)	13-3/4(349)	17-3/4(451)	44 (1118)	20-3/4(527)	REVISION B	
VBA 30	12X12	28 (711)	48 (1219)	54-3/16 (1376)	15-7/8(403)	13-3/4(349)	16 (406)	44 (1118)	29 (737)	SHEET 1 OF 1	
VBA 40	15X12	28 (711)	62 (1575)	57-5/8 (1464)	16-7/16(418)	16-1/16(408)	22-3/4(578)	58 (1473)	29 (737)		