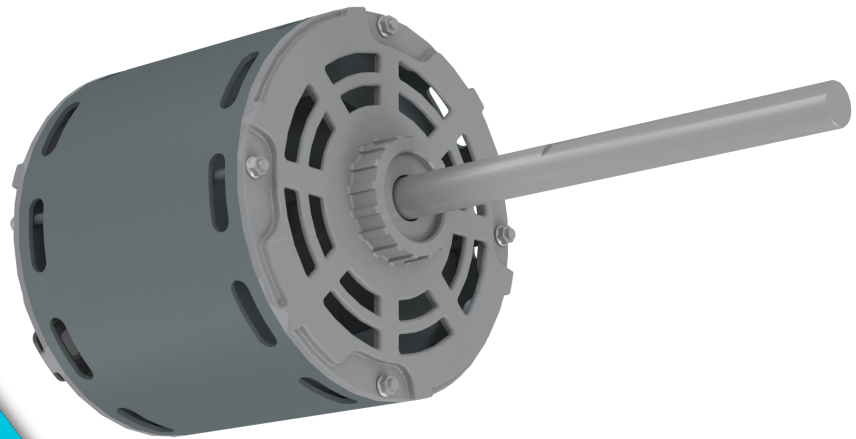




**Eco-telligent<sup>®</sup> Motor Series Version 4.0**



- **Soft Start Technology**
- **Quiet Operation**
- **Energy Efficiency**
- **Could Qualify For Utility Incentives**

Eco-telligent<sup>®</sup> 4.0 is IEC's new electronically commutated (EC) motor and is available in certain fan coils. Its robust design makes it perfect for use in draw through, hydronic heat applications. Available single-phase and three-phase voltages include 115, 208, 230, 277 and 460 V (3-phase only). Motor operating temperatures: -4° F to 160° F. UL Recognized.

Soft Start Technology allows motor to gradually increase its wattage demand, avoiding a spike in inrush current. This feature makes the motor more energy efficient and quiet.



Model	Fan Coil Motor Sizes									
	3	4	6	8	10	12	16	20	22	30
HDY/VDY	N/A	N/A	1/2	1	1/2	1	1	1	1-1/2	3
M**Y*	1/4	1/4	1/4	1/4	1/2	1/2	N/A	N/A	N/A	N/A

# - Except MIY and MGY

### Vertical Stacks/MODs (except MIY and MGY)

Unit Model	Motor Qty	Rated Motor FLA			Max Program Current		
		115 V	208-230 V	277 V	115 V	208-230 V	277 V
M**03	1	2.85	1.7	1.5	0.9	0.6	0.5
M**04	1	2.85	1.7	1.5	1.4	0.9	0.7
M**06	1	2.85	1.7	1.5	2.2	1.4	1.1
M**08	1	6.4	3.8	3.2	2.8	1.6	1.9
M**10	1	6.4	3.8	3.2	5.1	2.8	3.2
M**12	1	6.4	3.8	3.2	6.4	3.8	3.2

### Horizontal/Vertical Direct Drive Blower Coils (HDY/VDY) Motor Full Load Amp Data

Voltage	UNIT SIZE			
	06,10	08,12,16,20	22	30
	Motor HP			
	1/2	1	1-1/2	3
115 V, 50/60 Hz, 1-Phase	6.4	10.7	NA	NA
208 V, 50/60 Hz, 1-Phase	3.8	6.3	NA	NA
230 V, 50/60 Hz, 1-Phase	3.6	5.8	NA	NA
277 V, 50/60 Hz, 1-Phase	3.2	5.1	NA	NA
208 V, 50/60 Hz, 3-Phase	2.0	3.7	4.4	8.9
230 V, 50/60 Hz, 3-Phase	1.85	3.3	4.4	8.9
460 V, 50/60 Hz, 3-Phase	1.0	1.75	2.2	4.4

### Control Options

Interface Options	3 Speed	Proportional Speed	PWM
Speed Control	3 discrete speeds (H, M, L)	Proportional Airflow	4 discrete speeds. Provides 2% per second speed change gradient.
Thermostat Output	24 V – Up to 3 discrete speeds	0-10 VDC or 4-20 mA	24 V - Up to 4 discrete speeds
Field Airflow Adjustment	Each speed adjustable by potentiometer to any value in the motor's range	Motor dynamically set by controller to any speed in its operating range	Each speed adjustable by potentiometer to any value in the motor's range

Contact your local IEC Sales Representative for further details and pricing applicable to this product. Visit our website ([iec-okc.com](http://iec-okc.com)) to find your local IEC Sales Rep.

IEC Part #: I100-90030997  
FL-128 Rev.1 (3/2019)

©2018-2019 International Environmental Corporation (IEC)



5000 West I-40 Service Road  
Oklahoma City, OK 73128  
P: 405.605.5000  
F: 405.605.5001  
[www.iec-okc.com](http://www.iec-okc.com)