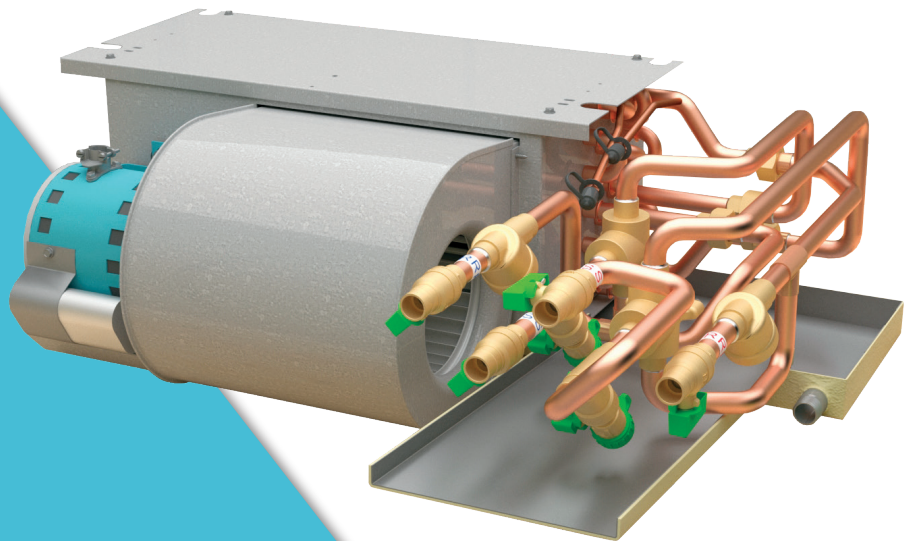




Horizontal Series Fan Coils



200 CFM TO 1200 CFM

When floor space is at a premium, this flexible series of fan coils provides an ideal solution for varying job requirements.

IEC's Horizontal Series Fan Coils offer:

- Seven Nominal Sizes
- Cabinetry Customization
- Exposed and hideaways units
- Telescoping units that provide a flush fit to the plaster or sheet rock



Higher
Education



Multi-family
Residential



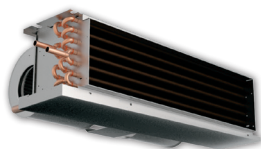
K-12
Education

Horizontal Series

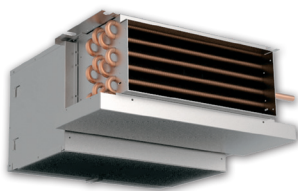
FAN COILS

Application Fit

- Multiple cabinet choices are available in seven nominal sizes (200-1200 CFM) for application in a variety of room layouts.



Horizontal Hideaway Series (CHY) is installed above the ceiling with or without ducted supply air open “soffit” return with an optional ceiling-mounted filter-grille.



Horizontal Hideaway with Plenum Series (CPY) is installed above the ceiling with or without ducted supply air and ducted return air. The return air filter is either mounted on the unit plenum or installed in an optional ceiling filter-grille.



Horizontal Cabinet Series (CXB) with aesthetically pleasing cabinetry is ideal for air conditioning in dormitories, small apartments, schools and many other applications. Front supply, bottom and rear return are available.



Horizontal Telescoping Hideaway Series (CBY) with painted access panel allows smooth fit up to plaster or sheet rock ceilings. Standard units include bottom louvered return air with the filter located in the access panel.

Design Flexibility

- Wide variety of coil configurations match heating and cooling loads.
- Standard PSC, High-Static PSC and ECM motor options.
- Optional powder-coated paint finish colors and grilles for exposed units.
- Various airflow configurations (front/bottom supply and rear/bottom return) meet design applications.
- Optional rear return with solid bottom panel for CXB and CBY units.
- Customizable cabinetry for renovation jobs to fit oversized valves and control packages.
- Outside air connections to meet ventilation requirements.
- Control valves and valve package options factory-installed to meet stringent specifications.
- Variety of insulation material to address IAQ.

Quality and Safety

- Every unit is tested and inspected at the factory for trouble free start-up.
- ETL listed and AHRI certified.

Ease of Service

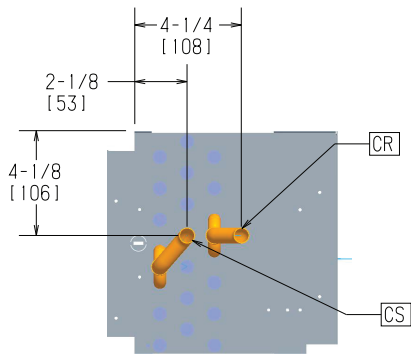
- Most components are accessible by simply removing the access panel.
- Replace filters without tools by opening the bottom panel of exposed units.
- Side filter access available for CPY units.
- Blower assembly is removable from the rear of coil for service and cleaning.
- Removable double-sloped drain pan.

Ease of Installation

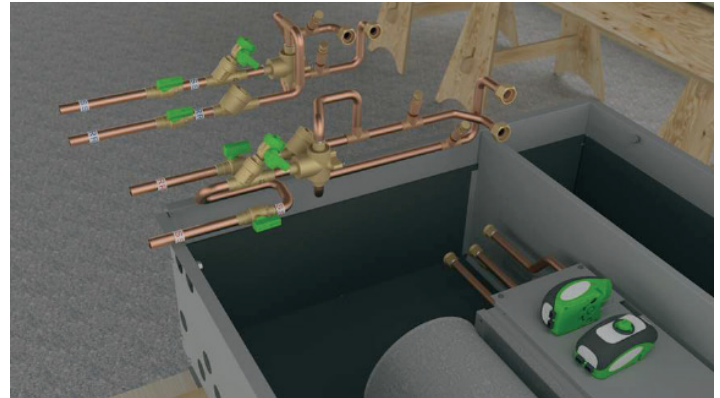
IEC's ceiling units come equipped standard with several features to make installation and service quick and easy.

- Ceiling coils comes standard with clear and consistent termination points for ease of job planning and installation.

Ex. CPY coil termination points



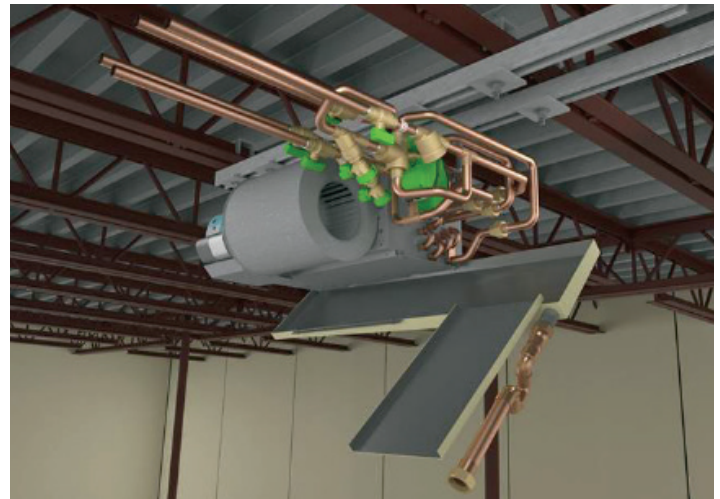
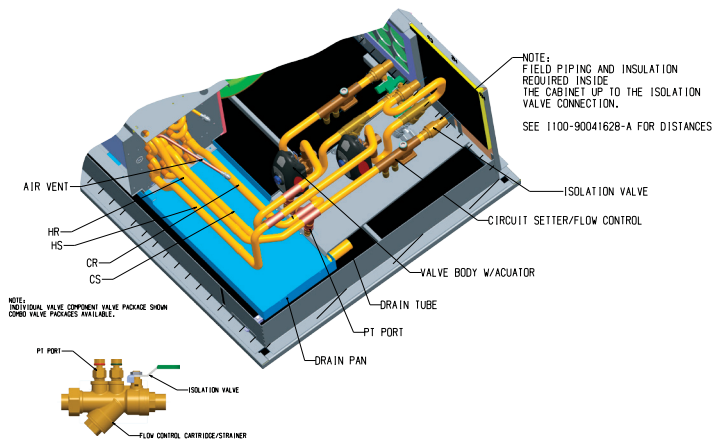
Ex. CXB coil termination and valve package assembly



- Factory assembled valve packages have consistent piping and serviceable components placement.

- All drain pans are removable for quick access to components.

Ex. CX/CB 3D valve package assembly



Horizontal Series

FAN COILS

IEC's Green Standard:

- Environmentally friendly hydronic fan coil system (uses no refrigerants)
- High MERV filter option available
- Bipolar Ionizer
- Highly efficient Eco-telligent™ ECM option
- Wi-Fi enabled, remote control thermostat options
- Anti-microbial drain pan coating option
- Recycled materials used in manufacturing processes whenever possible
- No HCFC foams or VOC paints used in manufacturing processes



24V Bipolar Ionizer



Venture Wi-Fi Thermostat



Contact your local IEC Sales Representative for further details and pricing applicable to this product. Visit our website (iec-okc.com) to find your local IEC Sales Rep.

IEC Part Number: I100-90002112

FL-020 Revision 5 (03/2021)

©2009-2021 International Environmental Corporation (IEC)



5000 W. I-40 Service Rd.
Oklahoma City, OK 73128
P: 405.605.5000
F: 405.605.5001
www.iec-okc.com